

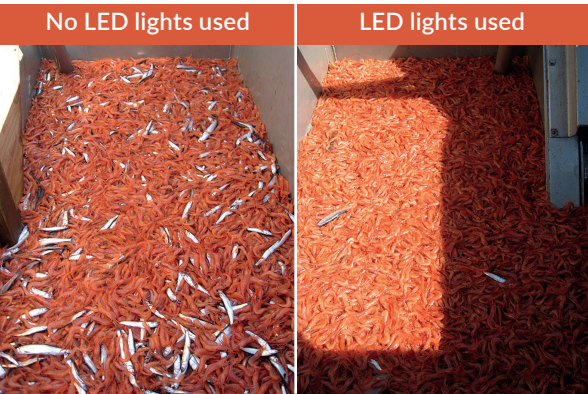
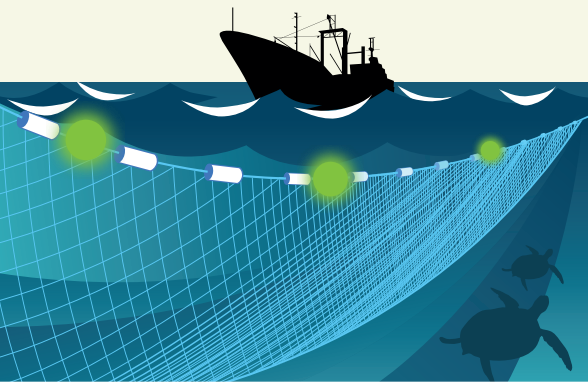
PATENTED TECHNOLOGY

NETLIGHT



Low cost, lightweight net illumination for reducing marine bycatch

Proven to reduce bycatch



TECHNOLOGY THAT WORKS FOR FISHERMEN AND THE ENVIRONMENT

A robust, cost effective solution to reduce marine bycatch

Effective at reducing marine mammal bycatch whilst not affecting your fishing operations



Highly Effective

Proven to reduce fish, turtle, cetacean, and seabird bycatch.



Increase Catch

Proven not to effect catch rates and, in many cases, enhance.



Fit and Forget

Proven to not interfere with fishing operations.



Durable

Tough polycarbonate housing, depth rated to 1200m.



Long Battery Life

Up to 1500+ hours battery life (replaceable/rechargeable).



Easy to Use

Light weight, dual point attachment suitable for set nets, seines, and trawls.



Auto Immersion Switch

On/off in water.

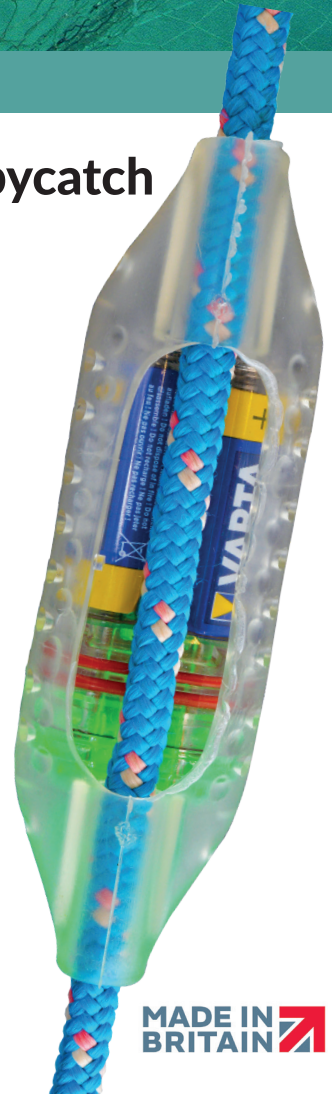


Approved Device for the Oregon pink shrimp fishery



Available in two colours: flashing or constant

Green and white.



FIND OUT MORE AT

fishtekmarine.com



NETLIGHT (PAT.) FITTING INSTRUCTIONS

BATTERY REPLACEMENT (ALSO SEE VIDEO ON WEBSITE)



Remove the NetLight from the rubber carrier

Use a small flat head screwdriver and prise off the end cap

Replace old batteries with new batteries ensuring the polarity is correct



Click the endcap back onto the NetLight. Test the light is working

Insert the NetLight back into the rubber carrier

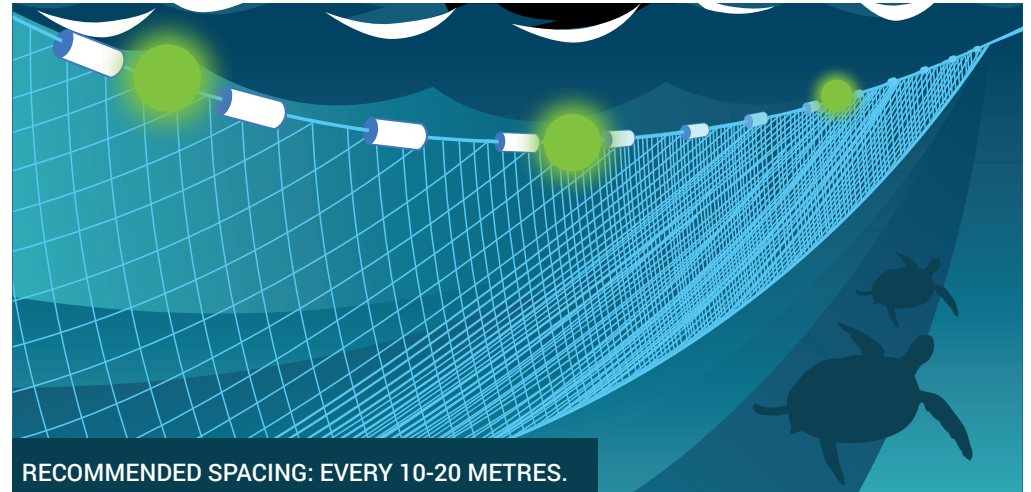
To prolong the life of the NetLight, batteries should be replaced in dry and dirt-free environments.

TECHNICAL SPECIFICATIONS

Dimensions	165mm x 47mm x 37mm
Weight with batteries	153 grams
In-water weight	25 grams
Depth rating	1200 m
Attachment	Dual point for attachment directly to net ropes (12mm diameter)
Battery type	2 X AA Alkaline - replaceable or rechargeable
Immersion switch	Automatic immersion switch
Light case	Durable polycarbonate
External carrier	Durable, TPE co-polymer rubber

FITTING THE NETLIGHT ONTO THE NET

NetLights may be threaded onto ropes joining panels on either the head rope or foot rope. We recommend they are fitted to the rope that is not used for hauling.



If nets are under extreme tension (for example if the NetLights are fitted to the hauling rope) a cable tie may be used around the NetLight (but under the rope for added security).

COLOUR OPTIONS

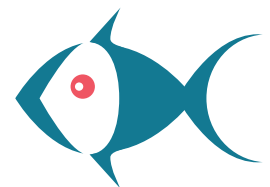
Type	Colour	Battery Life**
Constantly on	Green	500 hours
	White	500 hours
Flashing	Green	1500 hours
	White	1500 hours

**Battery durations are approximate and dependant on water temperature and battery quality.

Fishtek Marine
Unit 1a, Webbers Way
Dartington, Totnes, Devon, TQ9 6JY
United Kingdom

+44 (0) 1803 225 25

www.fishtekmarine.com | info@fishtekmarine.com



**FISHTEK
MARINE**